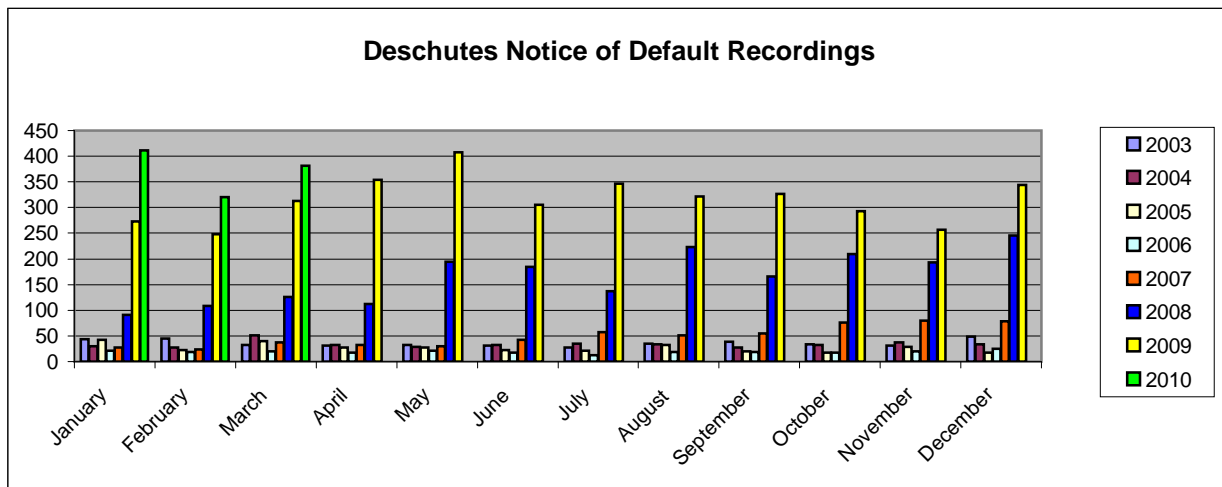




First American Title Company

Deschutes County Notice of Default Recordings

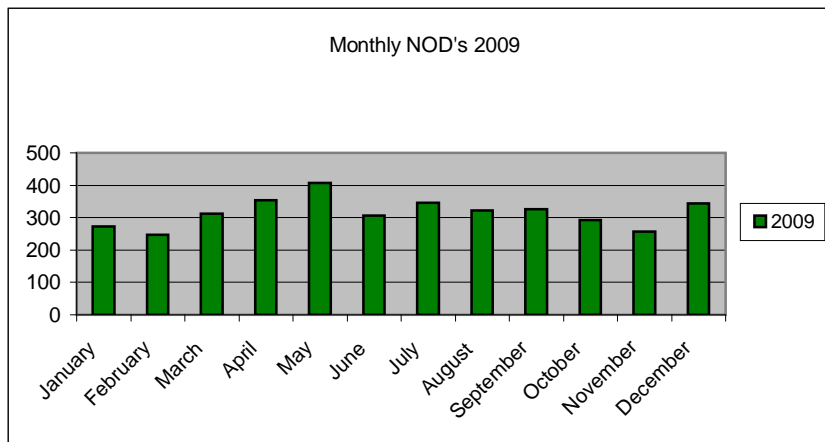
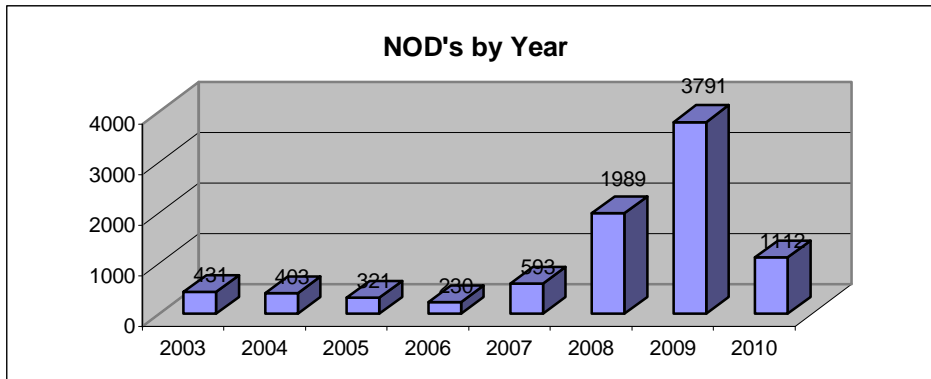
	2003	2004	2005	2006	2007	2008	2009	2010
January	44	30	42	21	28	91	273	411
February	45	28	22	19	24	109	248	320
March	33	51	40	20	38	126	313	381
April	31	33	28	18	33	112	354	
May	33	29	28	21	30	194	408	
June	31	32	22	17	42	184	306	
July	27	35	21	13	57	137	346	
August	35	34	33	19	51	223	322	
September	39	27	20	19	55	166	327	
October	34	32	18	18	76	209	293	
November	31	38	29	20	80	193	257	
December	48	34	18	25	79	245	344	
YTD	431	403	321	230	593	1989	3791	1112



Disclaimer: First American Title Company provides this information as a courtesy. The company assumes no liability for its content or accuracy. Our NOD numbers, generated from MetroScan, are derived from the number of NOD filings at the Deschutes County Clerk's office; we then review these documents to remove any duplicate or re-recorded entries and count each individual property identified on documents showing multiple parcels. Our total count reflects the number of individual properties (tax lots) that went into default, not just the number of documents filed. Therefore, our total numbers do not always match the number generated by the Deschutes County Clerk.



*First American
Title Company*



Disclaimer: First American Title Company provides this information as a courtesy. The company assumes no liability for its content or accuracy. Our NOD numbers, generated from MetroScan, are derived from the number of NOD filings at the Deschutes County Clerk's office; we then review these documents to remove any duplicate or re-recorded entries and count each individual property identified on documents showing multiple parcels. Our total count reflects the number of individual properties (tax lots) that went into default, not just the number of documents filed. Therefore, our total numbers do not always match the number generated by the Deschutes County Clerk.